

SURAJ

MANIFEST  
YOUR  
LIVING AT  
**THE PARK**

PRESENTING



# SURAJ PARK VIEW

SHIVAJI PARK, DADAR



*where*  
**GREEN**  
*meets*  
**BLUE**

Suraj Park View embodies a seamless blend of nature and heritage, drawing inspiration from its prime location near the serene Shivaji Park.

With uninterrupted lifetime views of Shivaji Park, it brings together tree-lined pathways rich in history and modern elegance to craft a lifestyle of timeless beauty and luxury. More than just a residence, it's a celebration of grace and harmony.

## PROJECT HIGHLIGHTS



39-STOREY  
MAJESTIC EDIFICE



LUXURIOUS  
APARTMENTS



8 APARTMENTS  
PER FLOOR



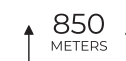
9 LEVEL  
PODIUM PARKING



LOCATED CLOSER TO  
SHIVAJI PARK



VIEWS OF  
BANDRA-WORLI SEA LINK



JUST 850 METERS  
FROM THE SEA



6 LIFTS +  
1 FIRE LIFT

*where*  
**LEGACY**  
*meets*  
**HERITAGE**

Where the heart of Mumbai  
beats amidst green serenity and  
echoes of timeless heritage.

Shivaji Park has been the backdrop to countless legendary moments  
and remains a thriving hub for local sports and community life.

With every step you take, you're walking through the pages of history,  
feeling the energy of past heroes while the calming sea breeze  
envelops you in tranquility.

**SPRAWLING GREENERY**

One of Mumbai's largest open spaces,  
perfect for recreation, sports, and relaxation.

**COMMUNITY VIBE**

A lively atmosphere with fitness enthusiasts,  
families, and social gatherings.

**CULTURAL LANDMARK**

A historic hub with deep-rooted significance  
in Mumbai's culture and heritage.

**PRESTIGIOUS ADDRESS**

A highly sought-after location blending  
tranquility with urban convenience.



# DADAR

In every corner of Dadar lies a tale, waiting to be discovered. In every breath of its air, history lingers, reminding us of a Mumbai that was, and the Mumbai that is.

Dadar is not just a locality; it's an emotion—a place that bridges the gap between Mumbai's storied past and its dynamic present. It's where stories were written, dreams were born, and traditions continue to thrive.



## LAND OF THE SPORTING ICONS

Dadar's crown jewel, Shivaji Park, is much more than a lush green expanse. It's the birthplace of cricket legends like Sachin Tendulkar, Sunil Gavaskar, and Ajit Wadekar. It's here that a young Tendulkar first swung his bat under the watchful eyes of coach Ramakant Achrekar.



## A LEGACY OF PLANNING

Dadar holds the distinction of being one of Mumbai's first planned suburbs. In the 1920s, it was designed with wide streets, open spaces, and a thoughtfully laid-out neighborhood that went on to become a blueprint for urban planning.



## A BLOOMING SUBURB

No editorial on Dadar is complete without mentioning its vibrant flower market. The Dadar Phool Market, with its riot of colors and fragrances, is a photographer's paradise and a symbol of Mumbai's early mornings.



## CULTURAL HOTSPOT

Dadar is also a cultural haven for Marathi literature and theater. It's where playwrights like Vijay Tendulkar crafted works that pushed boundaries, and where the Marathi Natya Mandir still lights up with performances that celebrate regional art and storytelling.



## A DIVINE DESTINATION

The sacred Siddhivinayak Temple in Dadar West is a beacon of devotion. Built in 1801, this temple draws millions of devotees, including Bollywood stars and industrialists, seeking the blessings of Lord Ganesha.

Nearby, the Portuguese Church (Our Lady of Salvation Church) stands as a relic of Mumbai's colonial past. Built in the 16th century, its quiet elegance is a sharp contrast to the bustling streets surrounding it.

*where*  
**CONVENIENCE**  
*meets*  
**CONNECTIVITY**

Be ready to experience the perfect balance of convenience and luxury, with every moment made effortless and connected to the best the city has to offer.

◀ TOWARDS SOUTH MUMBAI

SHREE SIDDHIVINAYAK TEMPLE  
1.3 KM

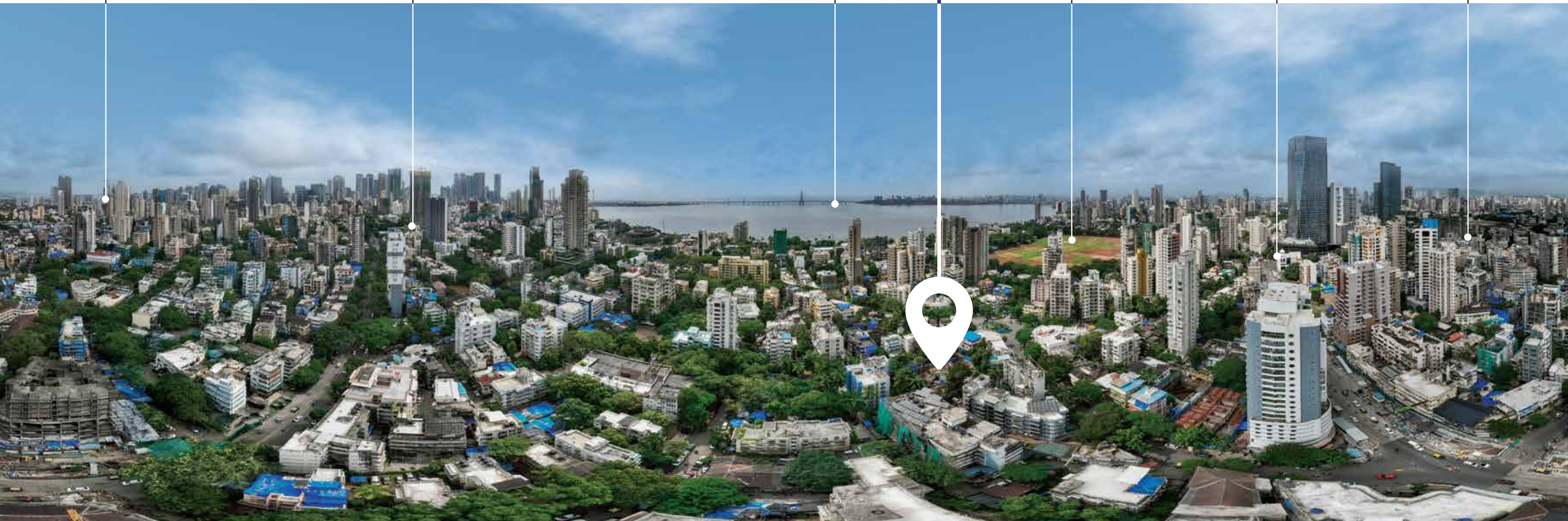
BANDRA-WORLI LINK  
4.1 KM

**SURAJ PARK VIEW**

SHIVAJI PARK  
150 METERS

SHIV SENA BHAVAN  
450 METERS

DADAR RAILWAY STATION  
1.2 KM



**CONNECTIVITY**

UPCOMING METRO STATION : 98 M-1 MIN  
DADAR STATION : 1.2 KM-7 MINS  
BKC : 6.9 KM-30 MINS

**PLACES OF WORSHIP**

JAIN DERASAR : 700 M-5 MINS  
PORTUGUESE CHURCH : 1.3 KM-5 MINS  
PRABHADEVI TEMPLE : 1.7 KM-7 MINS  
SIDDHIVINAYAK MANDIR : 1.3 KM-10 MINS

**ENTERTAINMENT & RECREATION**

NAKSHATRA MALL : 550 M-3 MINS  
STAR MALL : 850 M-4 MINS  
SHIVAJI PARK : 150 M-5 MINS  
RAVINDRA NATYA MANDIR : 1.5 KM-5 MINS  
DADAR CHOWPATTY : 1.2 KM-10 MINS  
PLAZA CINEMA : 1.5 KM-15 MINS  
PHOENIX PALLADIUM : 6 KM-20 MINS

**HOSPITALS**

SHUSHRUSHA HOSPITAL : 130 M-1 MINS  
DHANWANTRI HOSPITAL : 450 M-3 MINS  
HINDUJA HOSPITAL : 1.6 KM-15 MINS  
KEM HOSPITAL : 4 KM-25 MINS

**EDUCATION**

BALMOHAN VIDYA MANDIR : 500 M-3 MINS  
DR. ANTONIO DA SILVA HIGH SCHOOL : 700 M-4 MINS  
RUIA COLLEGE : 2.3 KM-9 MINS  
BOMBAY SCOTTISH SCHOOL : 1.6 KM-10 MINS  
RUPAREL COLLEGE : 1.8 KM-10 MINS

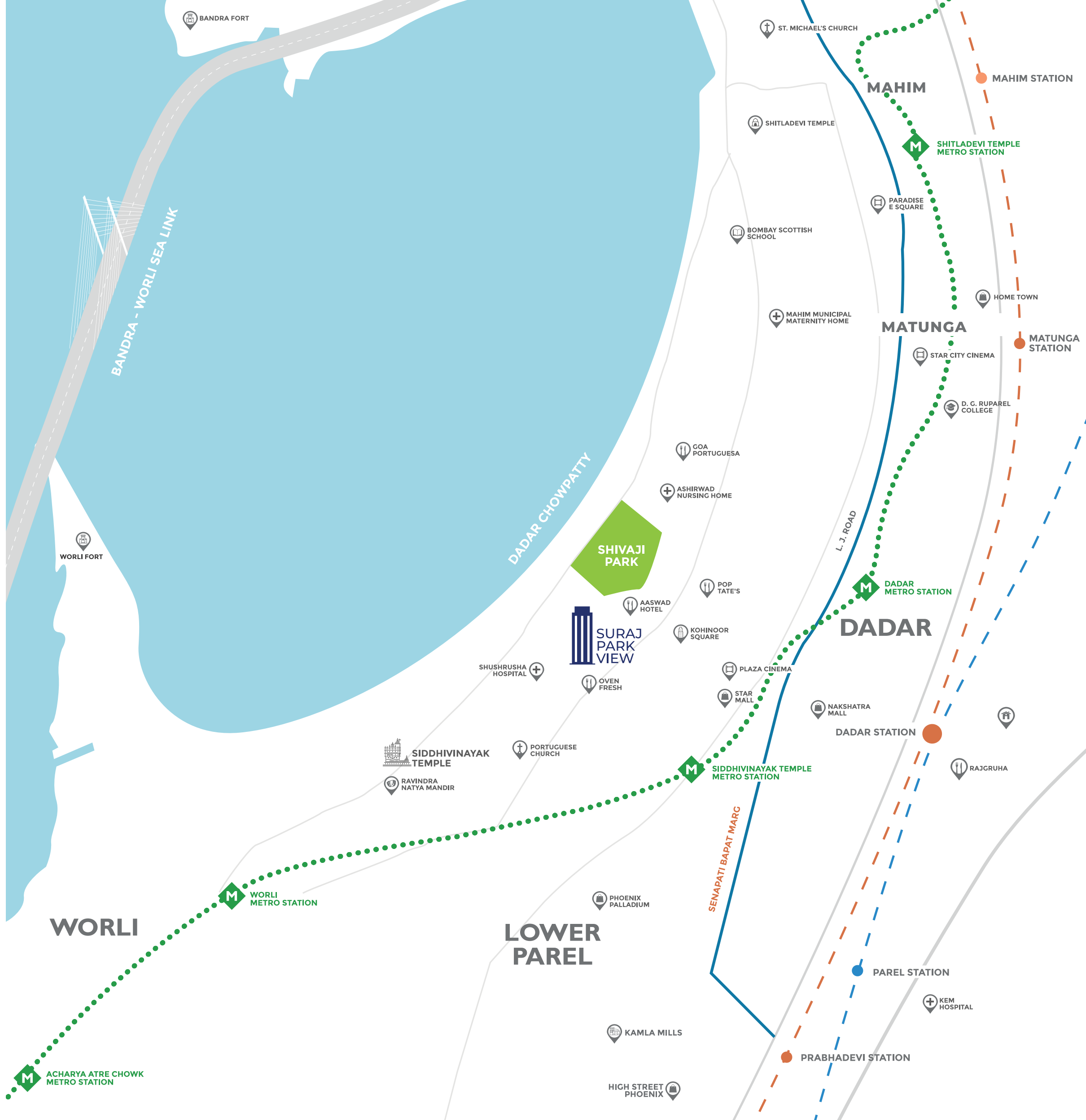
**SHOPPING**

DADAR MARKET : 1 KM-20 MINS  
AGAR MARKET : 1 KM-20 MINS  
HIGH STREET PHOENIX : 4.5 KM-25 MINS

**RESTAURANTS**

GOLD RUSH : 350 M-2 MINS  
SUJATA VEG : 400 M-3 MINS  
OVEN FRESH : 450 M-3 MINS  
TANATAN : 650 M-5 MINS  
AASWAD HOTEL : 700 M-5 MINS  
PRAKASH HOTEL : 400 M-5 MINS  
POP TATE'S : 700 M-5 MINS  
MANI'S CAFÉ : 750 M-5 MINS  
COAST & BLOOM : 700 M-5 MINS  
GOA PORTUGUESA : 1.3 KM-8 MINS

Disclaimer: Estimated travel time is tentative and based on normal traffic conditions. Upcoming infrastructure developments are subject to approval and development by the government and other relevant authorities.



where LIFE meets LUXURY



LAVISH & SPACIOUS LIVING ROOM



MAJESTIC DOUBLE HEIGHT ARRIVAL LOBBY

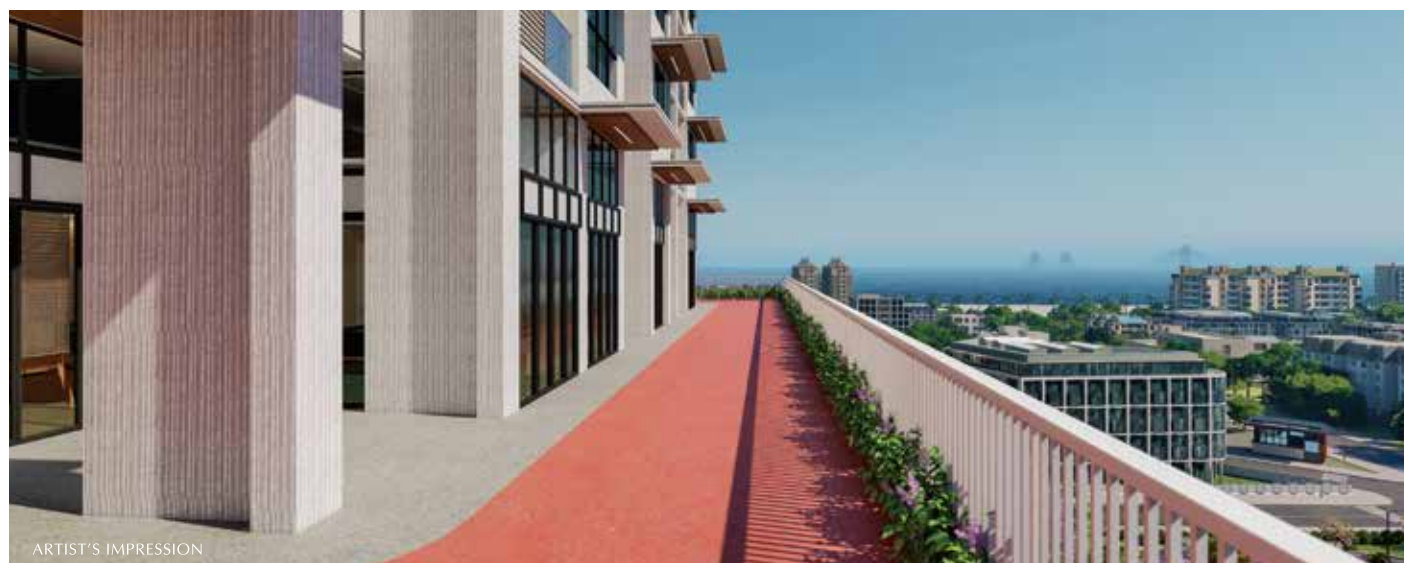


LUXURY AND COZY BEDROOM SPACES



AN ADDRESS WITH UNSTINTED VIEWS OF OCEAN

where INDULGENCES meets EXPERIENCES



YOGA & MEDITATION ZONE

EXCITING AND VIBRANT GAMING ARENA

BANQUET FOR UNFORGETTABLE EVENTS

OPEN GYM AND YOGA SPACES FOR WELLNESS

A SCENIC PATH FOR A REJUVENATING JOG

KID'S PLAY AREA

## PROJECT SPECIFICATIONS AT A GLANCE



**STRUCTURE**  
RCC Framed Structure



**LIVING ROOM & BEDROOM**  
Vitrified tiles from brands like Kajaria, Nitco, Asian or equivalent.



**KITCHEN**  
Granite/Vitrified platform of approved color  
Matching vitrified tiles in dado up to beam bottom  
White ceramic tiles below the platform  
Cut-outs for fridge & washing machine as per layout.  
Provision for Aquaguard & plumbing for washing machine.  
PVC Nahni traps & Chajja outside kitchen window for dry area



**BATHROOM & TOILET**  
Anti-Skid Flooring & Dado Vitrified Tiles up to beam bottom.



**STAIRCASE/PASSAGE/LIFT**  
Vitrified/Ceramic Tiles/Natural Stone of Branded Make



**EXTERNAL WALLS**  
Finished with double-coat Sand Tex/Acrylic paint (Asian make).  
Sand-faced plaster RCC Walls with waterproofing chemicals.  
Asian, Dulux or equivalent make paint



**INTERNAL WALLS**  
Three coats of Asian Plastic Emulsion paint over POP punning.  
RCC walls with aluminum shuttering get direct POP finish.  
No false ceilings inside flats.



**DOORS**  
Main Entrance: 45mm thick, laminate finish, brass hinges, Godrej or equivalent lock  
Internal: 35mm flushed doors with marine ply inserts, Godrej or equivalent lock, enamel paint, teak wood frames  
Toilet/W.C.: Wood-paneled/flushed marine ply with Formica laminate



**WINDOWS**  
Aluminum windows (domal make) with anodized/powder-coated finish  
5mm clear glass panes with provision for grills/railing



**SANITARY & C.P. FITTINGS**  
Toilet: Neycer/Hindustan or equivalent, wall-hung WC, Jaquar fittings  
Kitchen: Nirali sink (21" x 18" x 8"), Jaquar swing sink cock  
Fittings: Jaquar Continental series (bib cock, diverter, stop cocks, bottle traps)



**PLUMBING**  
Concealed G.I. pipes (Zenith/TATA) or CPVC (Astral) in external and internal plumbing



**ELECTRICAL**  
Copper wiring with modular switches of branded make (Finolex FLRS, Siemens, etc.).  
Smart lighting: Sensor-based lighting in common passages and podium area.



**FIRE FIGHTING SYSTEM**  
Includes wet risers, sprinklers, smoke detectors, and alternate power supply for lifts and common areas.



**FIXTURES & FASTENINGS**  
Brass oxidized of heavy duty and good quality for doors and windows.



**LIFTS**  
Otis or equivalent lift with car panel in S.S. finish will be provided.



**ENTRANCE LOBBY**  
Entrance lobby finished with high-quality marble, granite, or tiles.  
Ceiling adorned with quality POP design and fitted with approved light fittings.



**SOCIETY OFFICE, GYMNASIUM**  
Society office and gymnasium as per MCGM norms



**GATES**  
High-quality sliding/openable gates with light fixtures on both pillars.



**PUMPS**  
2 submersible pumps in each underground tank (approved make).



**INTERCOM**  
Intercom facility connecting all flats and security.



**CCTV**  
IP-based CCTV system for entrance lobby, compound area, and all lifts.

where  
PLANNING  
meets  
PERFECTION

# FLOOR PLAN

## GROUND FLOOR



# FLOOR PLAN

## AMENITIES FLOOR



## FLOOR PLAN

### 18<sup>TH</sup> FLOOR

### RERA CARPET AREA

FLAT#	TYPE	AREA (SQ.FT.)
1	2 BHK	670.00
2	1 BHK	469.00
3	1 BHK	464.00
4	3 BHK	715.00
5	2 BHK	755.00
6	2 BHK	774.00
7	1 BHK	506.00
8	2 BHK	670.00



----- MAIN ROAD -----

----- FRONT FACADE (INSIDE LANE) -----



## FLOOR PLAN

### 24<sup>TH</sup> FLOOR

### RERA CARPET AREA

FLAT#	TYPE	AREA (SQ.FT.)
1	2 BHK	670.00
2	1 BHK	469.00
3	1 BHK	464.00
4	3 BHK	872.00
5	2 BHK	525.00
6	REFUGE	
7	1 BHK	506.00
8	2 BHK	670.00



----- MAIN ROAD -----

----- FRONT FACADE (INSIDE LANE) -----



## TYPICAL FLOOR PLAN

25<sup>TH</sup> - 28<sup>TH</sup> FLOOR

## RERA CARPET AREA

FLAT#	TYPE	AREA (SQ.FT.)
1	2 BHK	670.00
2	1 BHK	469.00
3	1 BHK	464.00
4	3 BHK	872.00
5	2 BHK	761.00
6	2 BHK	862.00
7	1 BHK	506.00
8	2 BHK	670.00



----- MAIN ROAD -----

----- FRONT FACADE (INSIDE LANE) -----



*where*  
PARTNERSHIP  
*meets*  
PERFECTION

Suraj Park View is a result of a powerful partnership, where trusted names come together with a shared vision of creating more than just homes. With Suraj Estate Developers leading the way, and many industry experts by their side, the collaboration brings together unmatched expertise, deep-rooted values, and a commitment to excellence.

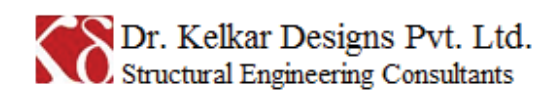
DESIGN ARCHITECT



MEP CONSULTANT

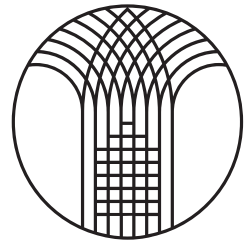


STRUCTURAL CONSULTANTS



LEGAL CONSULTANTS





S U R A J

## BUILDING DADAR'S LEGACY ONE LANDMARK AT A TIME

Suraj Estate Developers Limited share a legacy of progress, seamlessly blending heritage with modernity. With over 42 projects delivered across Dadar, Prabhadevi, and Mahim, the brand has redefined urban living in South Central Mumbai through quality and innovation.

## SURAJ'S MANTRA



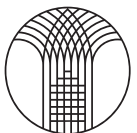
MahaRERA No. PR1170002500887

MahaRERA Website  
<https://maharera.mahaonline.gov.in>



**SURAJ  
PARK VIEW**  
SHIVAJI PARK, DADAR

Anant Patil Marg, Near Shivaji Park,  
Dadar (West), Mumbai, Maharashtra 400 028  
Call: 95133 02872



**SURAJ**

Corporate Office

Suraj Estate Developers Ltd., Aman Chambers, 3<sup>rd</sup> Floor,  
Century Bazaar, Prabhadevi, Mumbai - 400025.



@surajestate

[www.surajestate.com](http://www.surajestate.com)

Project Funded by

